

the moldflow toolbox

automate tasks

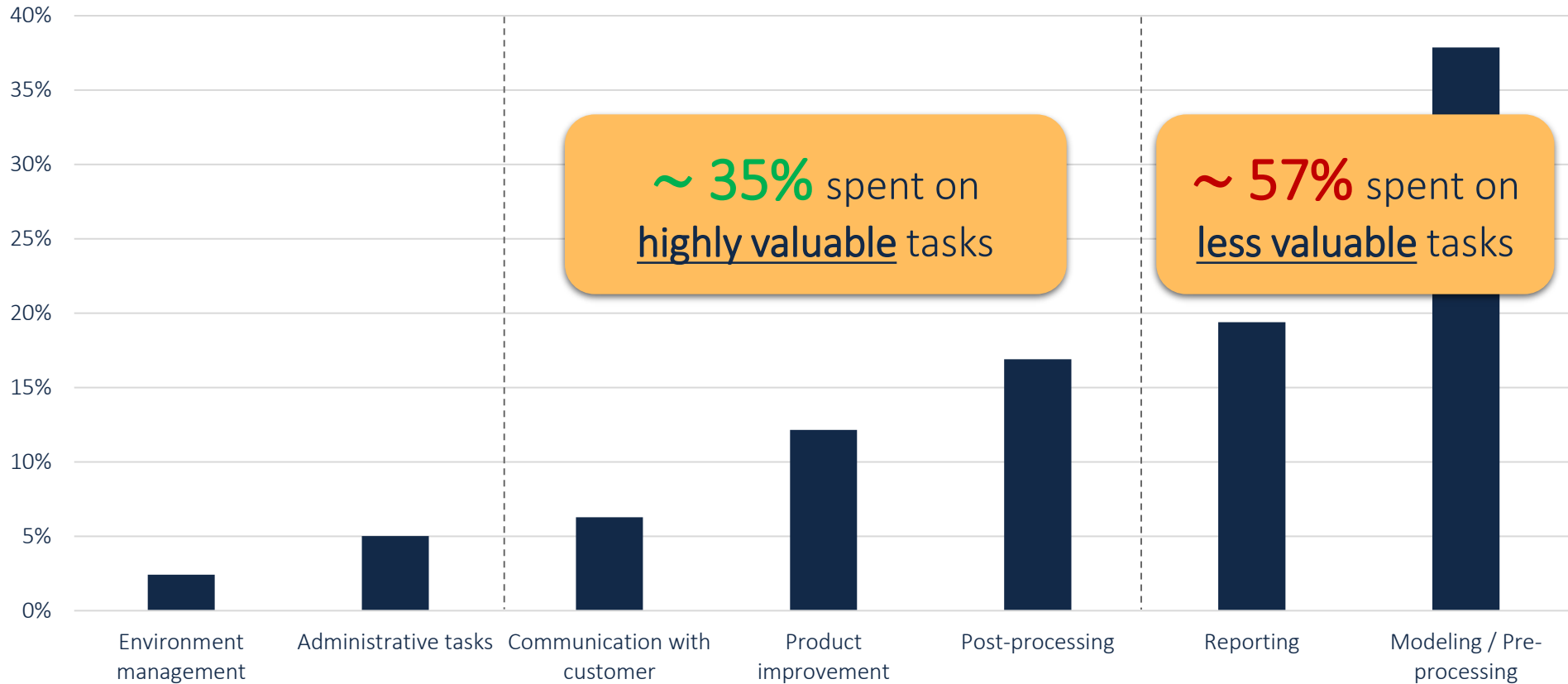
improve quality

increase consistency



how time is spent in simulation

average weekly time spent by simulation engineers



~ 35% spent on highly valuable tasks

~ 57% spent on less valuable tasks

added value

none

none

high

high

medium

low ⚠

low ⚠

our vision:

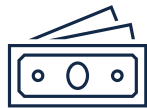
removing non-value adding tasks from the workflow



save time



improve consistency
(shared workflow)



save cost



improve designs
(more iterations)



increase quality
(less mistakes, more checks)



increase documentation

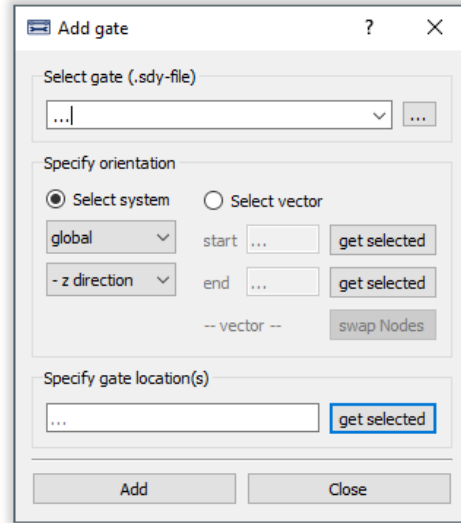
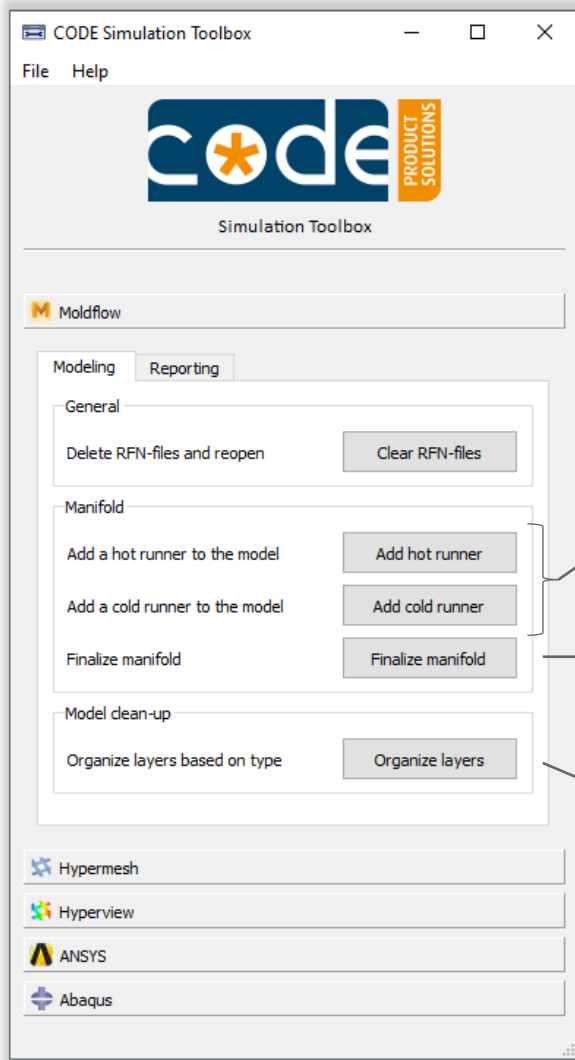


reduce monotony



grab a coffee

modeling features



places a new gate to a designated location

time saved: 30 – 45 min



connects gates with specific element type

time saved: 15 – 30 min

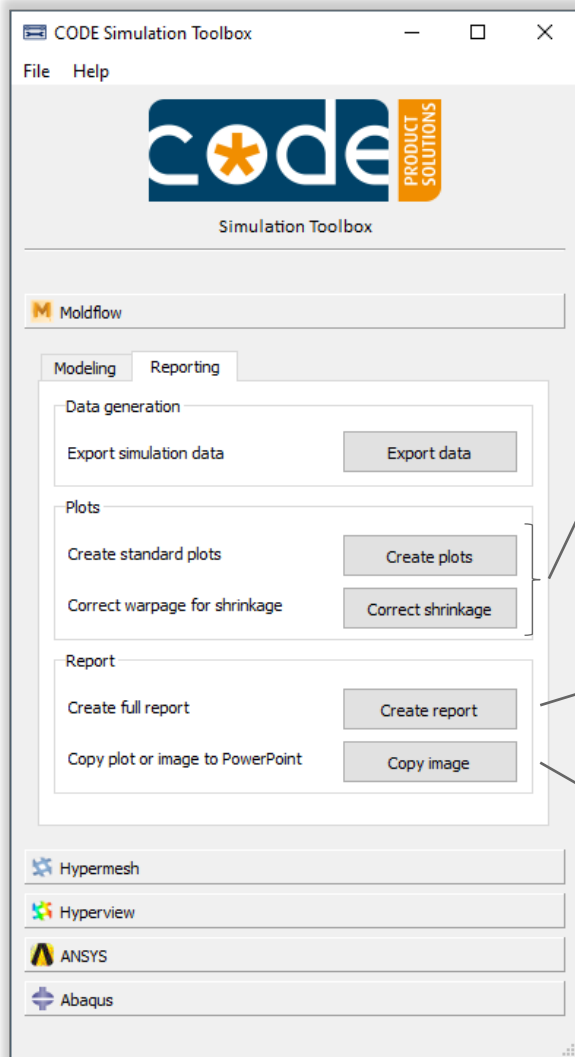


organizes layers and folders by element type

time saved: 15 – 30 min

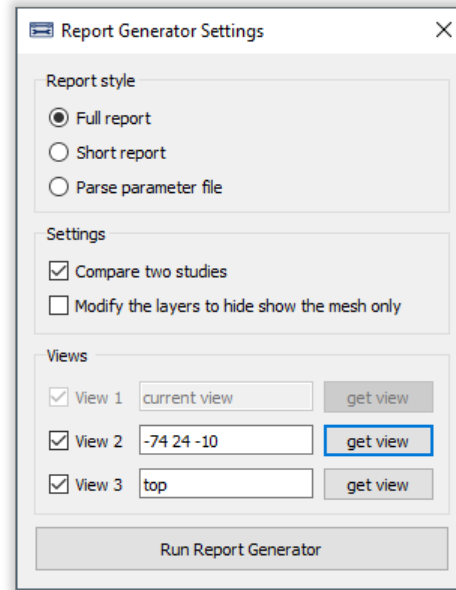


reporting features



creates and modifies plots (thickness, shrinkage compensation, etc.)

time saved: 15 - 30 min



creates full report, allows comparing of studies

time saved: 120 - 360 min



copies the current plot to PowerPoint

time saved: 15 - 30 min



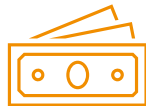
benefits

		<u>time saved</u>
<u>modeling</u>	clear RFN files	10 – 20 min
	include gate	30 – 45 min
	finalize manifold	15 – 30 min
	organize layers	15 – 30 min
<u>reporting</u>	modify plots	15 – 30 min
	full report	120 – 360 min
	copy to PowerPoint	15 – 30 min



save time

→ 3.5 – 10 hours per project*



save cost

→ 17.500€ – 50.000€ per year**



increase quality (less mistakes, more checks)



reduce monotony



improve consistency (shared workflow)



improve designs (more iterations)



increase documentation

* assuming 2-5 different designs / concepts per project

** based on 50 projects per year with an hour rate of 100,-

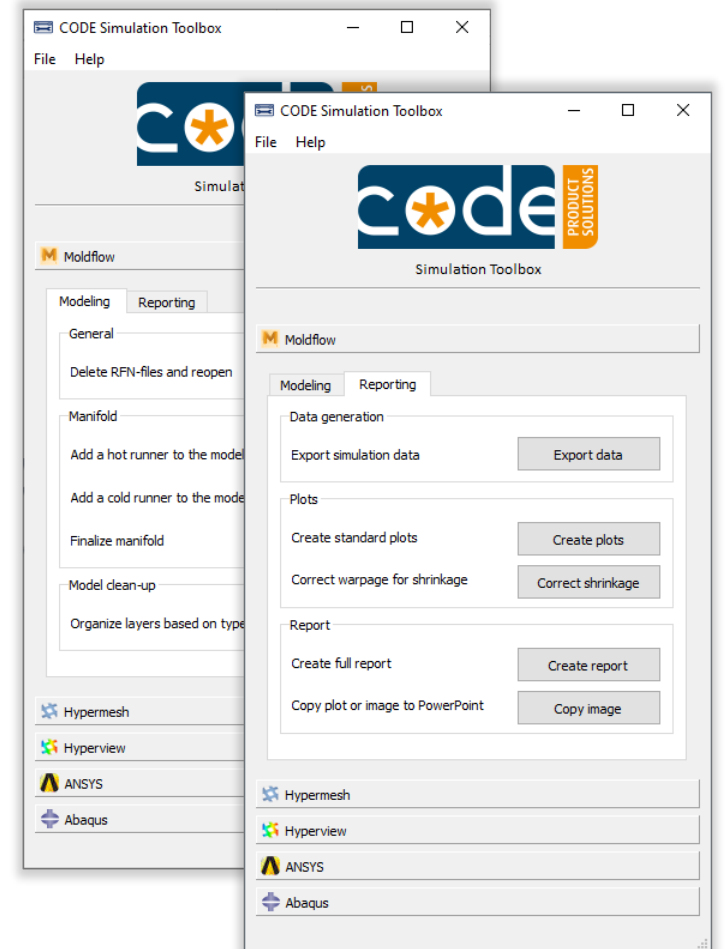


“Contact us
for more info!”

Hendrik Schütte
Lead Developer

+31 6 21 92 32 52

hendrik.schuette@code-ps.com



code-ps.com/toolbox